



**NOLSEN HP-B-SS-100 (standard parts)**  
összeszerelési útmutató



# NOLSEN

A Nolsen márka társalapítója, a Cool4U Systems Kft., mely 2001-es alapítása óta elismerések sorát nyerte el, valamint nevéhez fűződik a Gree légkondicionálók és hőszivattyúk kizárólagos magyarországi vezérképviselete is.

A Nolsen másik társalapítója az Easykit Kft., mely épületgépészeti rendszerek tervezésével és forgalmazásával foglalkozik. Fő célja az állandó magas minőség, ár-érték arány és kiváló szolgáltatás biztosítása.

A Nolsen hőközpontok kiegészítő egységeivel együtt minden olyan elemet tartalmaznak, melyek elengedhetetlenek egy családi ház hőszivattyús fűtéséhez. A telepítési folyamat elősegítése érdekében berendezéseink előszerelve érkeznek a vásárlóhoz.

A kompakt hőközpont kiváló választás mind a fűtőkorszerűsítés, mind pedig új hőszivattyús szisztéma kiépítése esetén, valamint azok számára is akik új belépők a hőszivattyús rendszerek kivitelezésében.

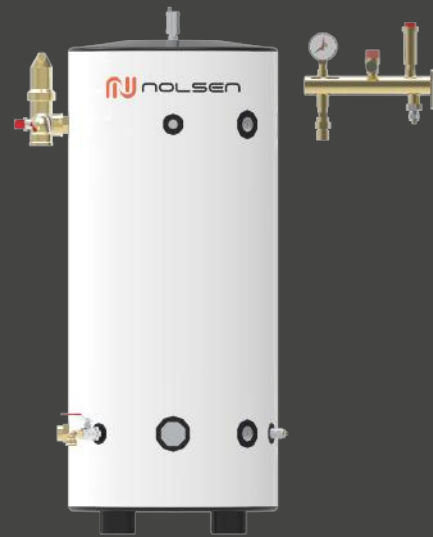
## HP-B-SS-100 HŐKÖZPONT

Termék mérete:	1030 X 1080 X 620 mm
Burkolat:	Porfestett acél (0,5mm)
Lemezvastagság:	1 mm
Puffer tartály térfogat:	100 L
Puffer tartály anyag:	Rozsdamentes acél (sus304)
Teljesítmény:	4-16 kW (hőszivattyú)
Maximális üzemi nyomás:	10 bar
Direkt kör:	Igen
Kevert kör:	Esbe keverőszeleppel
Mikrobuborék leválasztó:	Igen
Mágneses iszapleválasztó:	Igen
Külső csőrendszer:	Rozsdamentes acél
Tartozékok:	Fali konzol, gumitalp

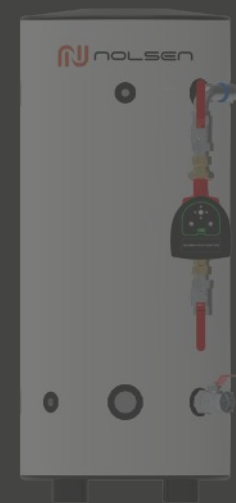




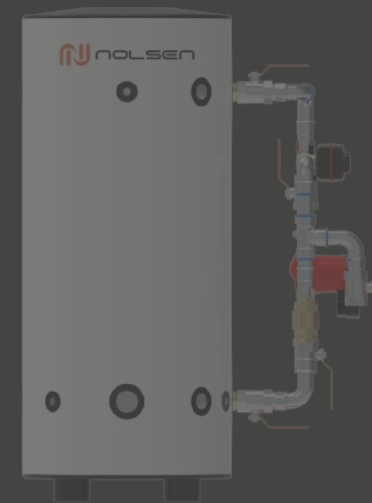
TARTÁLY



STANDARD PARTS



DIREKT KÖR











KEVERT KÖR





STANDARD PARTS

A1 A2 A3 A4

### A1

	x 2	1/2"
	x 1	6/4"
	x 1	16x2 mm x 1/2"
	x 1	1/2"
	x 1	1/2"
	x 1	1/2"
	x 2	5/4"
	x 1	







### A2

	x 2	5/4"
	x 2	5/4"
	x 1	5/4"

### A3

	x 1	5/4"
	x 3	5/4"
	x 2	5/4"
	x 1	5/4"
	x 1	5/4"

### A4

	x 1	
	x 1	16x2 mm x 3/4"
	x 1	3/4"
	x 1	1/2"
	x 1	1/2"
	x 1	1/2"

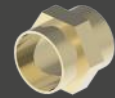
## A1



x2  
1/2"



x1  
1/2"



x2  
5/4"



x1  
6/4"



x1  
1/2"



x1



x1  
16x2 mm x 1/2"



x1  
1/2"

## A2



x2  
5/4"



x2  
5/4"



x1  
5/4"

## A3



x1  
5/4"



x3  
5/4"



x2  
5/4"

## A4



x1



x1  
1/2"



x1  
16x2 mm x 3/4"



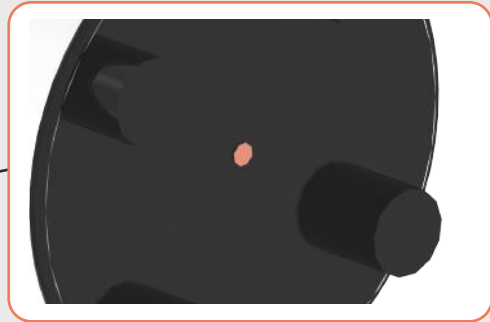
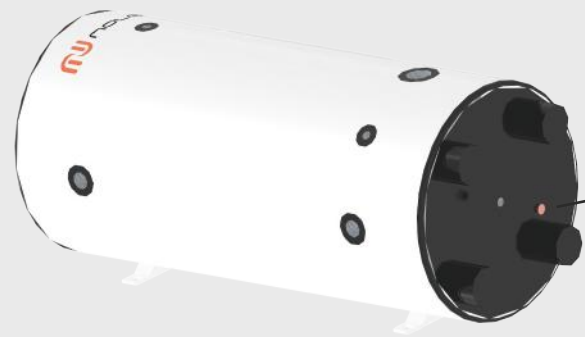
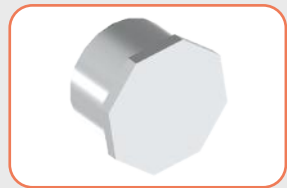
x1  
1/2"



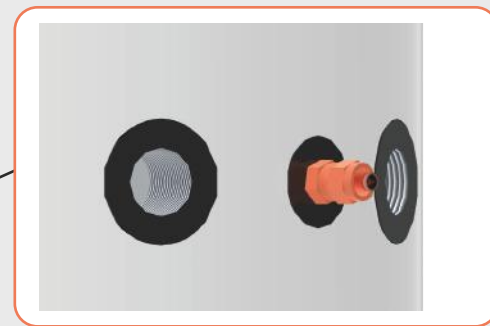
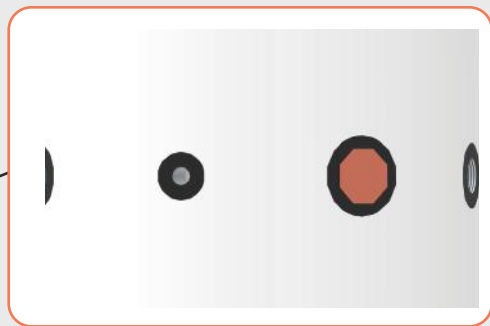
x1  
3/4"

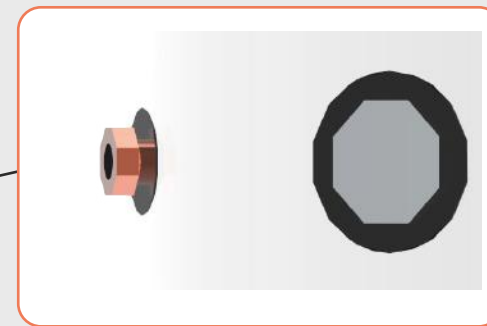
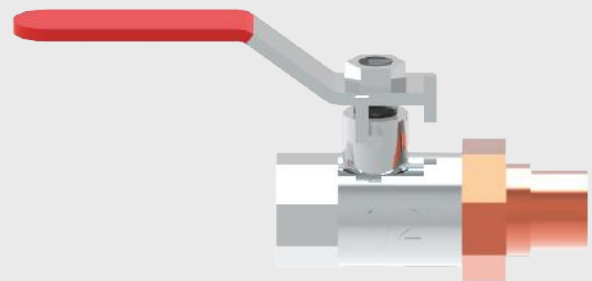
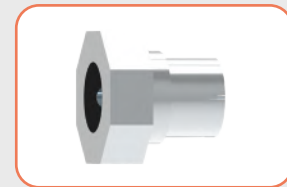
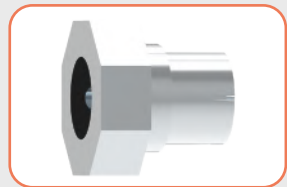


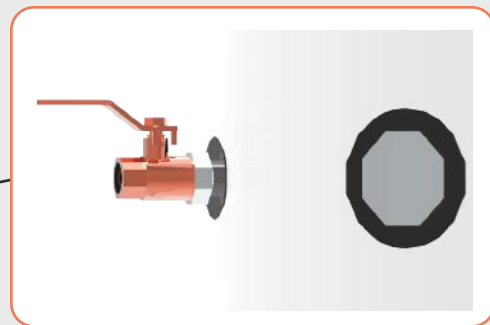
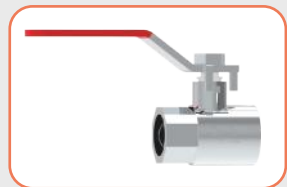
x1  
1/2"

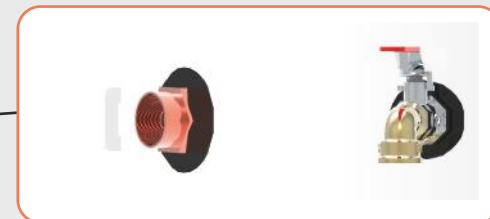


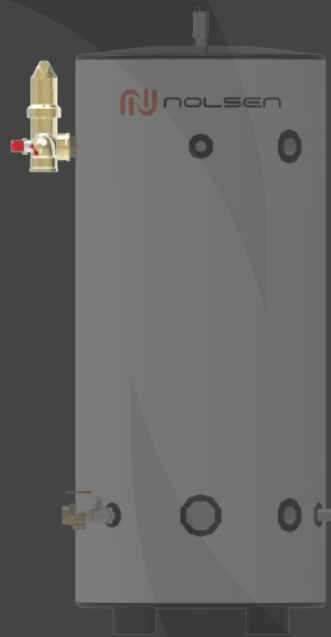






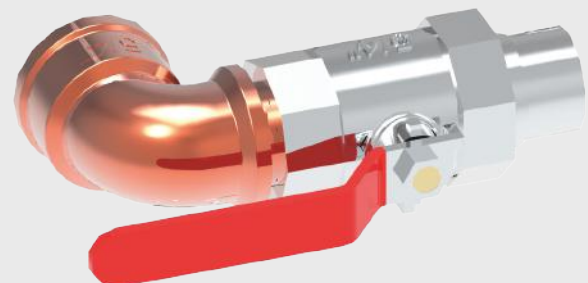
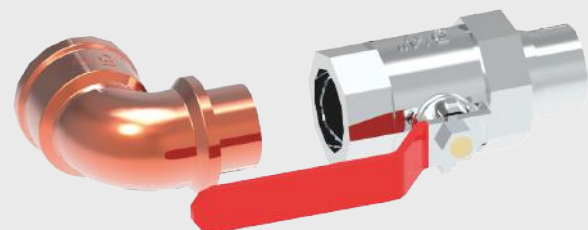
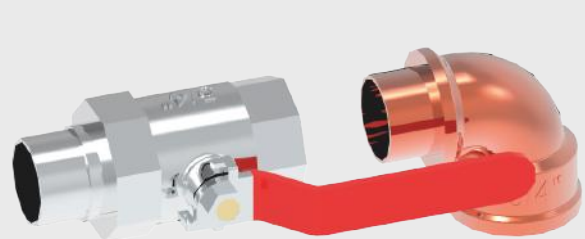


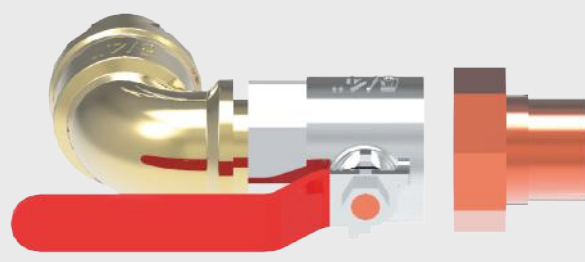
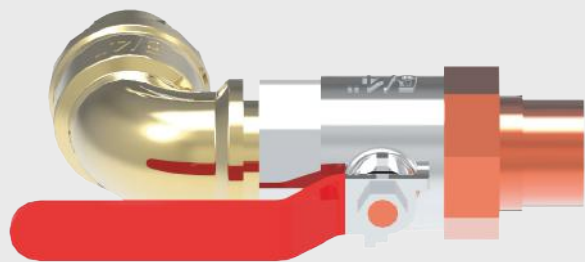


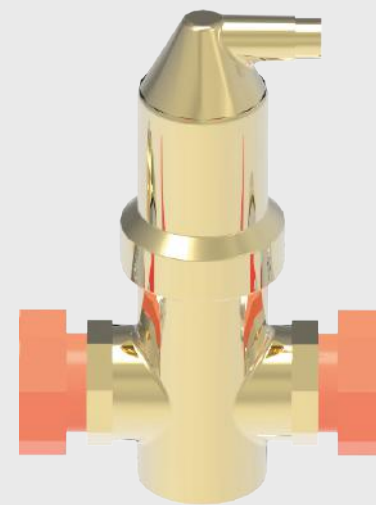
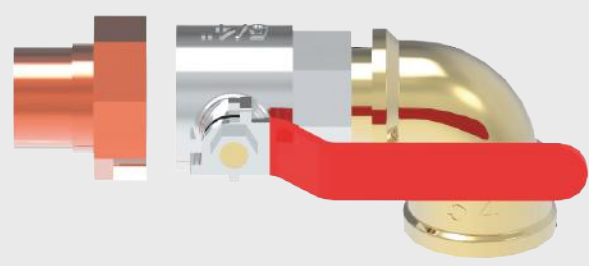
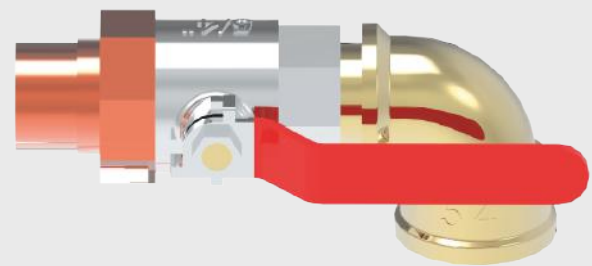


STANDARD PARTS

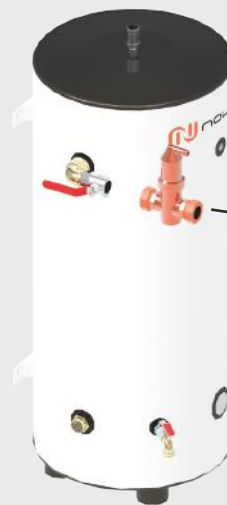
A1 A2 A3 A4

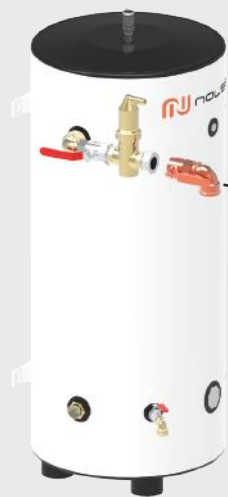


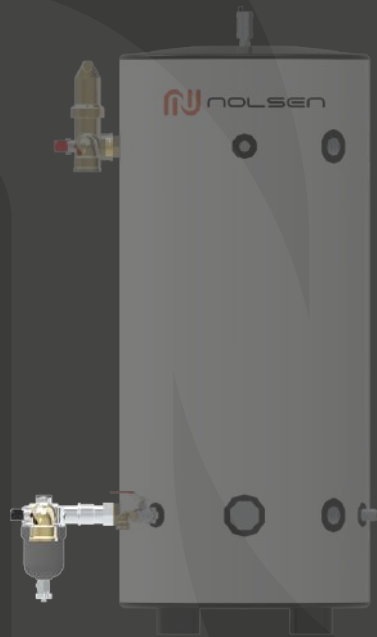






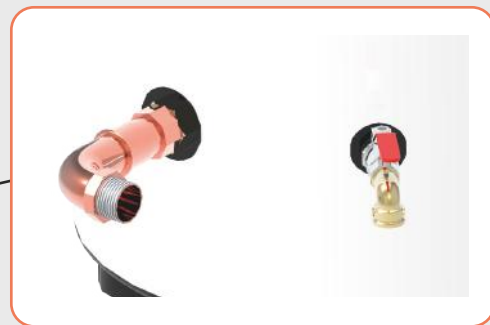


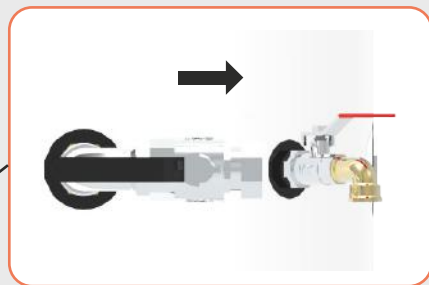
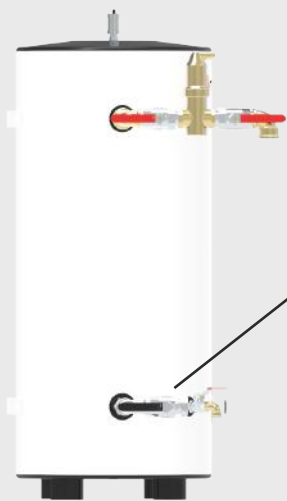


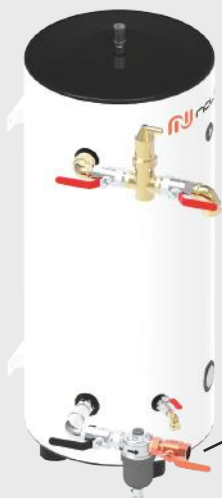


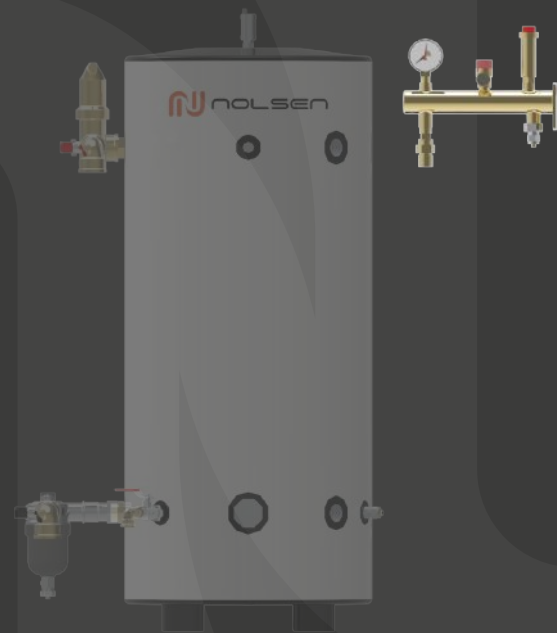
STANDARD PARTS

A1 A2 A3 A4



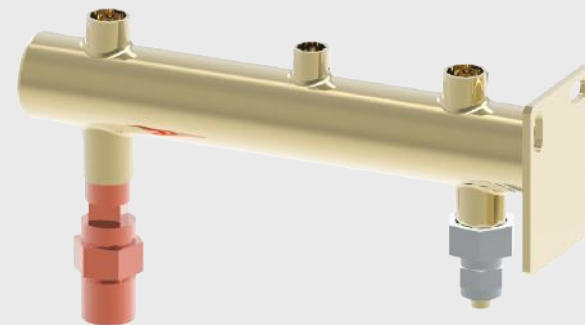
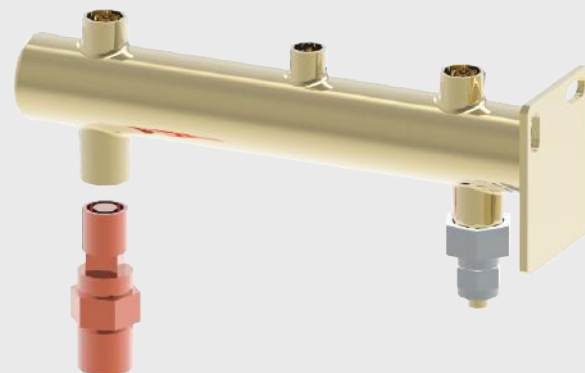
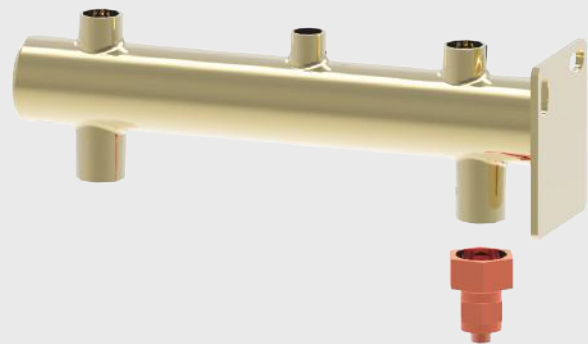




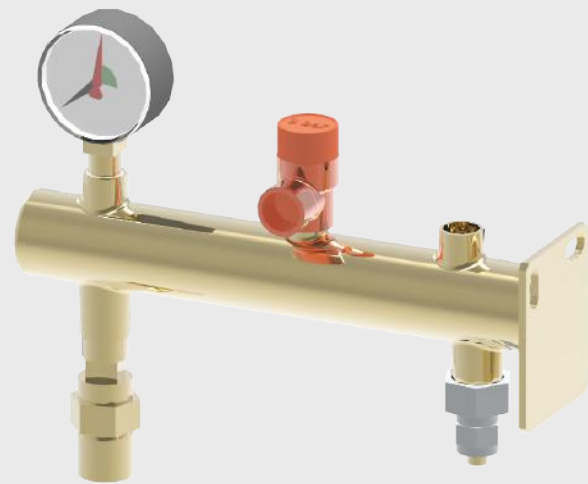
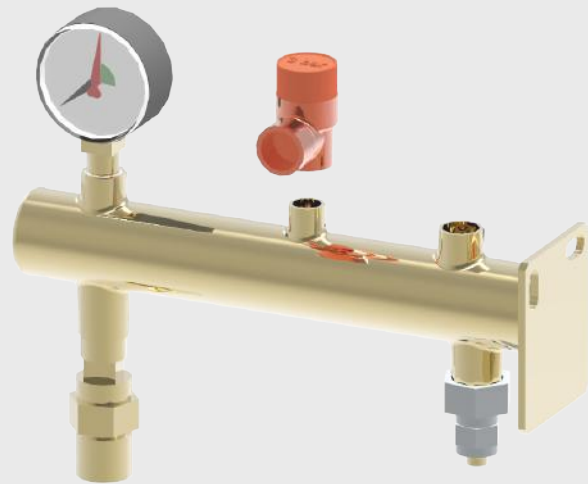
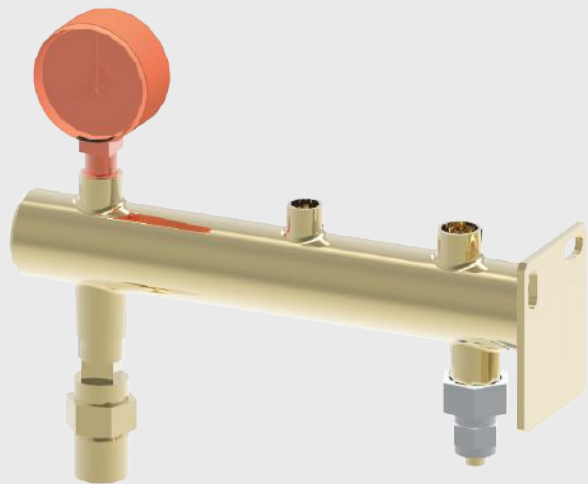
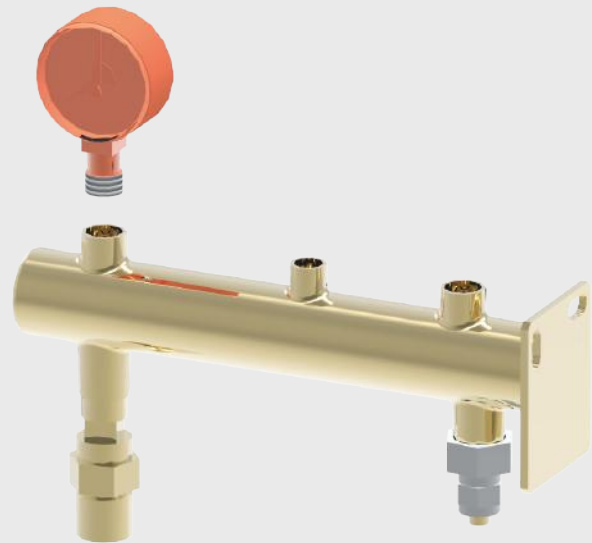


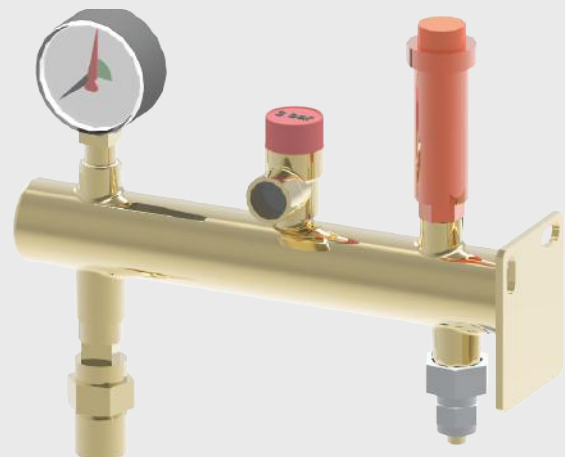
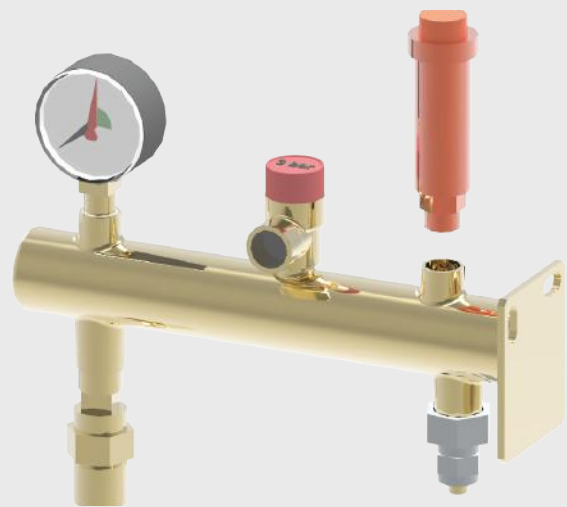
STANDARD PARTS

A1 A2 A3 A4











letölthető fájlok

